

HOME

COMPANY

CONCRETE PUMPS

PARTS

SUPPORT

CONTACT US

USED EQUIPMENT

43X-5RZ

The light weight go to pump for your fleet



Height & Reach	43X-5RZ	
Vertical reach	42.3 m	138' 9"
Horizontal reach	38.3 m	125' 8"
Reach from front of truck	36.76 m	120' 7"
Reach depth	30.8 m	101' 1"
Unfolding height	8.2 m	26' 11"
6-Section Boom	43M	
1st section articulation	92 °	
2nd section articulation	180 °	
3rd section articulation	180 °	
4th section articulation	245 °	
5th section articulation	250 °	
1st section length	7.8 m	25' 7"
2nd section length	6.8 m	22' 4"
3rd section length	7.2 m	23' 7"
4th section length	8 m	26' 3"
5th section length	8.39 m	27' 6"
General Specs	43M	
Pipeline size (ID) metric ends	125 mm	5 "
Rotation	Continuous Swing 360°	
End hose — length	3.5 m	11' 6"
End hose — diameter	125 mm	5 "
Outrigger spread L - R swing out, telescope & extend down	8 m	26' 3"
Outrigger spread swing out & extend down	9.1 m	29' 10"

Pump Specifications		43X-5RZ	
Output —	rod side	160 m ³ /hr	209 yd ³ /hr
	piston side	108 m ³ /hr	141 yd ³ /hr
Pressure —	rod side	87 bar	1,262 psi
	piston side	130 bar	1,886 psi
Material cylinder diameter		230 mm	9 "
Stroke length		2,100 mm	6' 11"
Max strokes per minute —			
	rod side	31	
	piston side	21	
Volume control		Zero to full	
Hopper Vibrator		Standard	
Hard-chromed material cylinders		Standard	
Hydraulic system		Closed-loop	
Hydraulic system pressure		350 bar	5,075 psi
Drive cylinder diameter		140 mm	5.5 "
Rod diameter		80 mm	3 "
Maximum size aggregate		60 mm	2.4 "

FINANCING OPTIONS AVAILABLE

VIEW OUR LATEST BROCHURE

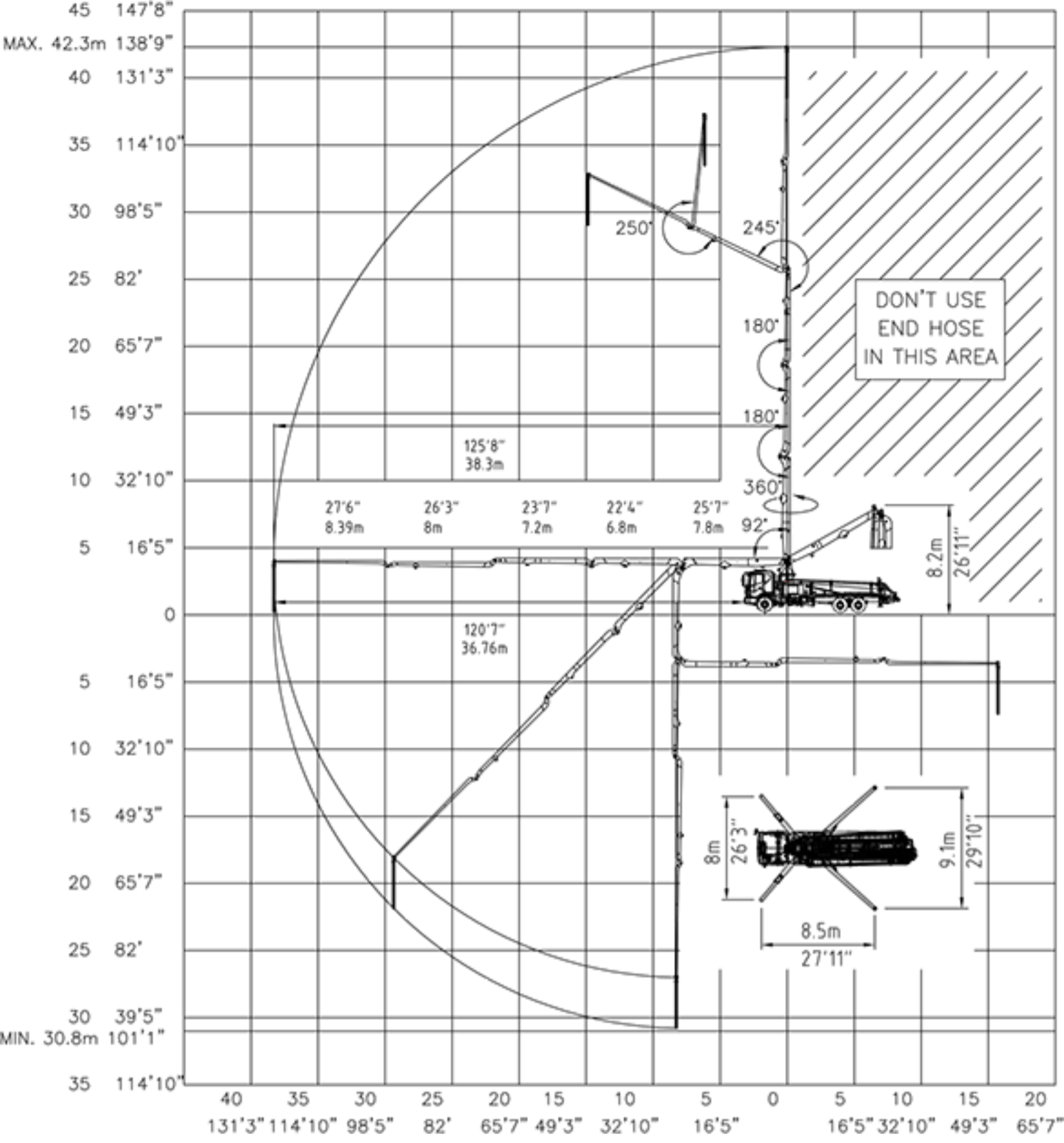
REQUEST A CUSTOM QUOTE TODAY

Operator Friendly HBC Radio Remote



Chassis Options





Photos and drawings are for illustrative purposes only.
Dimensions will vary with different truck makes, models and specifications.
For available options, please contact the factory.



Contact Us



10720-48St. SE, Calgary, Alberta, Canada T2C 3E1

5968 - E Hwy 67 Alvarado, Texas, USA 76009

Proudly Distributed Across North America By:

